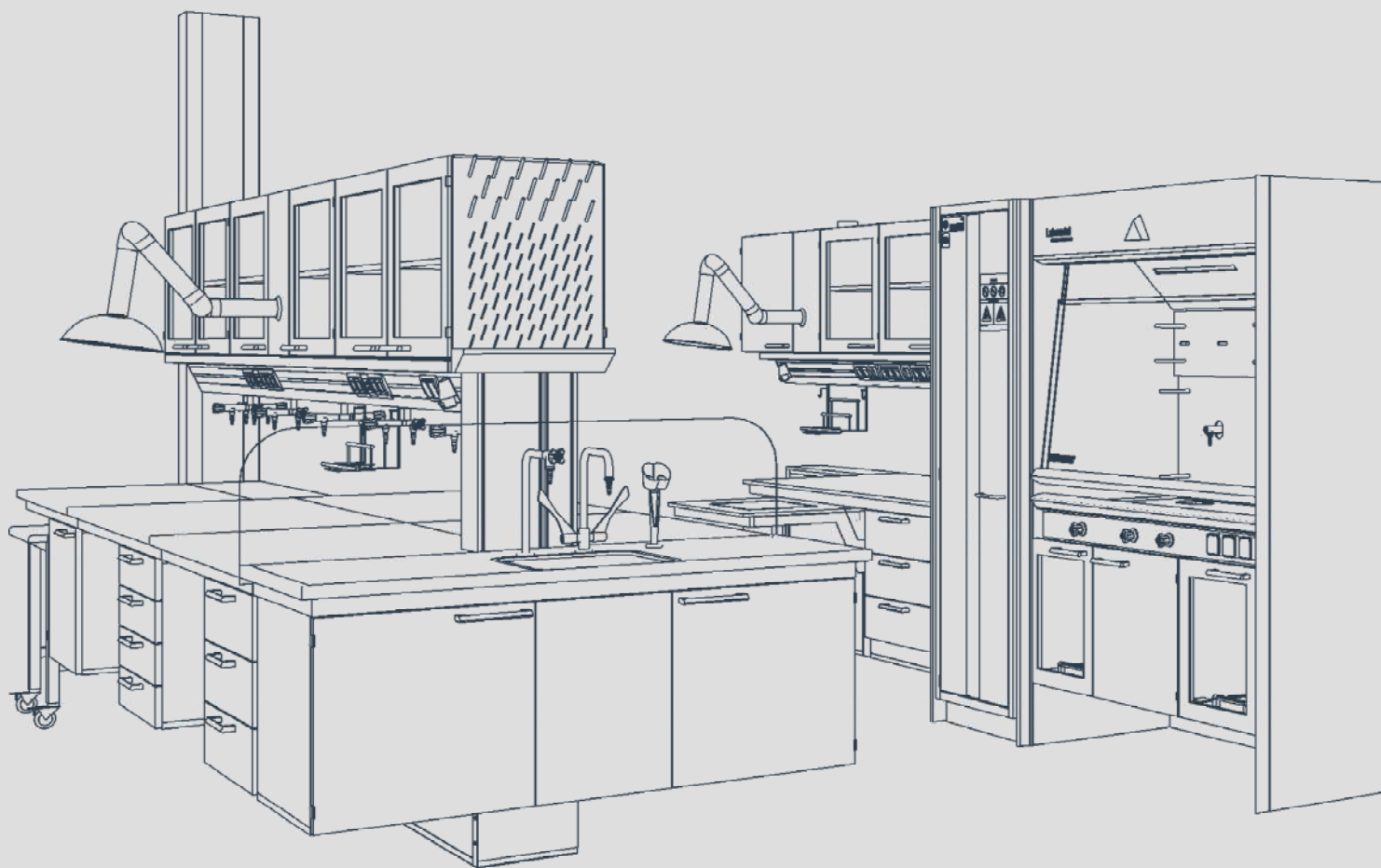


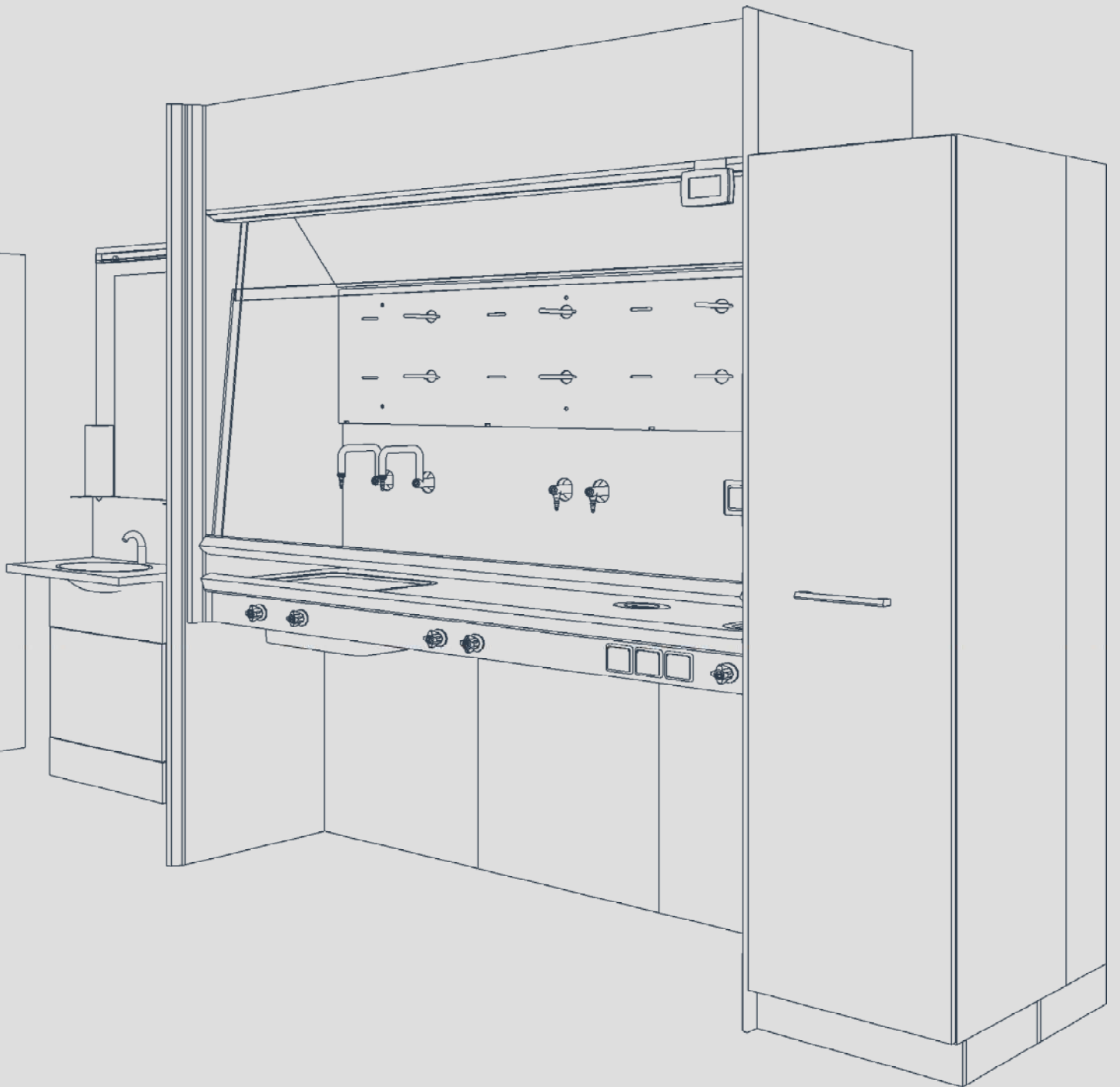
labmodul

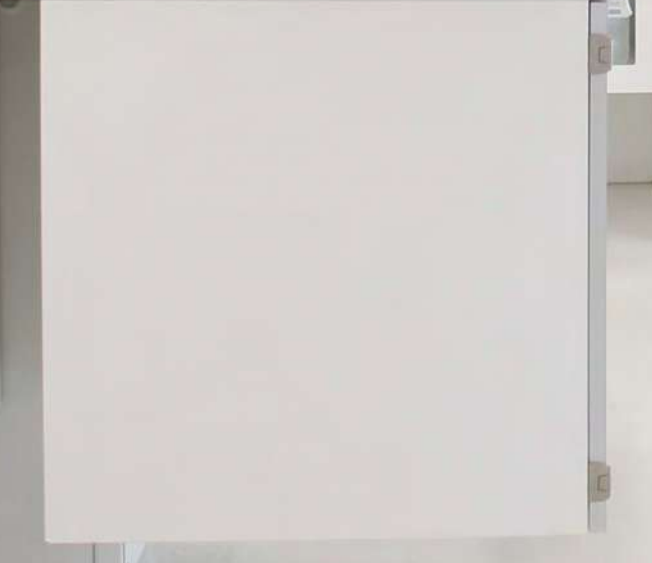
Designing safety



Designing safety...









labmodul



LAB CHAIRS



LABMODUL LAB CHAIRS

- ┌ Intelligent Flex function
- ┌ Ergonomics and comfort features
- ┌ Hygienic
- ┌ 3D-Flex function
- ┌ Easy to clean
- ┌ Light weight

Good solutions are always characterized by intelligence and simplicity. The characteristics of innovation, in general, are no less relevant to the chair on which these innovations are based. The lab chair is the new chair for all kinds of laboratories. Its intelligent Flex function offers comfort and laboratory ergonomics with minimal adjustments required. It has all the properties required for laboratory work and, at the same time, it is light, universally applicable and unbeatable in terms of price and performance. To put it simply

The best adjustment is one you don't need to make.

Thanks to its innovative Flex functions, the lab chair is perfectly suited for laboratory work and therefore offers intuitively good seating.



Hygienic, flexible, compact – in no other working environment will you find requirements as strict as those in the laboratory. Laboratory chairs from Labmodul not only adapt to the postures typically found in this area, i.e. the forward-leaning position at the microscope, they also boast hygienic design and compact construction.

They can also be flexibly adjusted without confusion. These are seating solutions that thus adapt perfectly to the special challenges faced by laboratory workers.

How do you sit in the world's most innovative location? The demands on laboratory facilities are constantly increasing: hygiene issues, space requirements, ergonomics, comfort, design and technical qualities are all challenges which a laboratory chair has to overcome in the modern working environment. Our chair can do all this with its supreme light-weight design.

How do you sit in the world's most innovative location? The demands on laboratory facilities are constantly increasing: hygiene issues, space requirements, ergonomics, comfort, design and technical qualities are all challenges which a laboratory chair has to overcome in the modern working environment. This lab stool can do all this with its supreme light-weight design.



- modern, laboratory-suited design
- robust and light
- very economical
- ergonomic and comfortable
- innovative Flex functions
- intuitive handling
- hygienic design
- minimal joints and positive-locking
- resistant to disinfectants
- electrostatically dissipative (optional)
- anti-bacterial upholstery
- large range of colours
- 10 year guarantee – including on gas pressure springs



- universities, training rooms, institutes
- medicine, diagnostics
- chemistry, pharmaceuticals, biotech, life sciences
- environmental and food technology
- research, development, quality assurance
- laboratories with ESD requirements
- production large range of colours work environments



3D-FLEX FUNCTION OF THE BACKREST

The Lab stool backrest has a 3D-Flex function. It adapts to the movements of the user and therefore follows the upper body when leaning back or turning sideways. This ensures a dynamic seating position and provides optimal support for the body in any position.



INTUITIVE HANDLING

This lab stool automatically adapts to the body with its Flex function. There is no need for complicated adjustment levers. Only the height of the seat needs to be adjusted. This makes the stool a self-explanatory chair and ensures that its ergonomic functions are properly used.



FLEX FUNCTION ON THE FRONT EDGE OF THE SEAT

The front edge of the seat automatically follows the forward-angled working position of the body, which is typical for laboratory work. This ensures optimal blood circulation and effectively prevents pressure pain and dead legs. It therefore provides exceptional comfort and optimal ergonomics.



SEATING COMFORT

The lab stool wins you over from the very first impression. In addition to the Flex function, an extra thick upholstery provides the comfort of deep seating. It brings seating comfort to the laboratory.



Colors: Blue, anthracite, white, orange and green.



This lab stool is on hand wherever you need it. It is the uncomplicated solution for short periods of sitting. However the labmodul lab stool is in no way inferior to the swivel chair when it comes to laboratory suitability. It is washable, resistant to disinfectants and robust. The PU-foam upholstery is very comfortable.



SIMPLE, ECONOMIC, VERSATILE

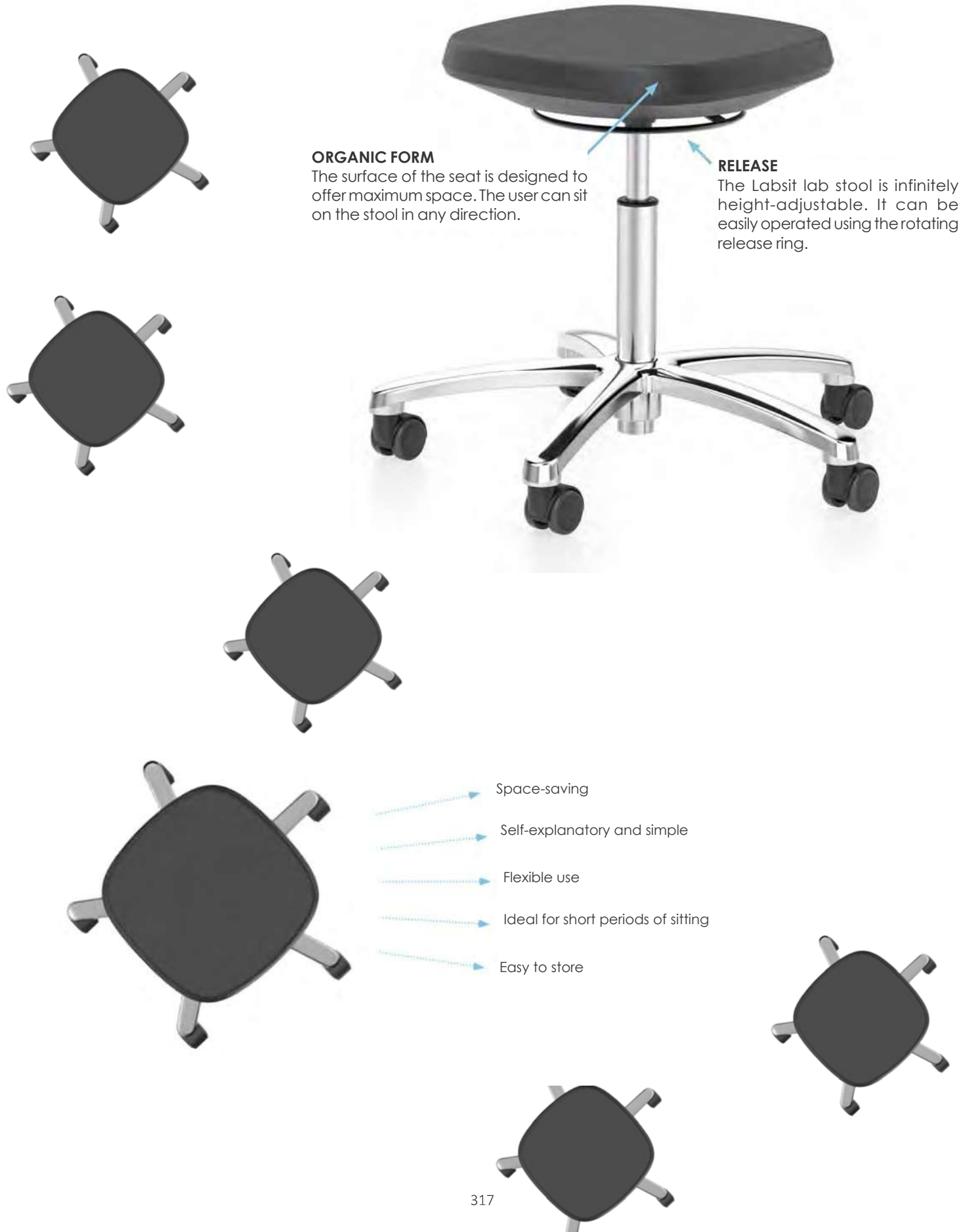
Working in a laboratory is not always about concentrating for long periods of time. Often it may involve simply preparing a sample or loading a machine. The lab stool plays a key role in comfortable working in these situations.

ORGANIC FORM

The surface of the seat is designed to offer maximum space. The user can sit on the stool in any direction.

RELEASE

The Labsit lab stool is infinitely height-adjustable. It can be easily operated using the rotating release ring.



Space-saving

Self-explanatory and simple

Flexible use

Ideal for short periods of sitting

Easy to store



Perfect for every workplace

A perfect system is characterised by the fact that it has the right solution for every requirement. This is because the LCB9011 series has been conceived as a seating system. Apart from LCB9012 and LCB9013, the stool and standing aid guarantee that you receive optimum support at every workplace.

Everything fits with this system: for example, the round base of the stool into the star base of the chair. So that two specialists share the space of one.

LCB9011 series puts an end to compromises between sitting and standing in the laboratory and offers the right solution for every single working situation.

Color: Black, blue, grey, red, mint and white.





Perfect balance with optimum ease of operation.

The essence of healthy sitting is dynamic sitting. With the uniquely adjustable Balance mechanism the saddle moves subtly along with your movements. These 'micro' movements of your pelvis ensure that muscle groups and intervertebral discs are not constantly under severe static strain. This prevents pain, helps you maintain your working posture longer, and exercises your core muscles. The degree of movement of the Balance mechanism can be set to your own preference, and can be adjusted by rotating the ring.

The LCS5001 series Seamless saddle stool has anatomically shaped saddle that tilts the pelvis and ensures a healthy and relaxed back posture. The advantage of the seamless version is that dirt can't accumulate in the seams.

The seat can be upholstered in Stamskin or PUxx, both of which have antibacterial properties. A unique characteristic of PUxx is that it can be cleaned with Isopropyl alcohol and that offers a solution when it comes to workplaces such as the medical field where high demands are placed on hygiene. The Jumper is a wider version of the Amazone and is available in different heights.

Colors: Bright green, bright red, orange, turquoise, light blue, dark blue, antracite, gray, black, green/antracite and mix color combinations.



Jumper

The Jumper has a wider seat, resulting in a slightly smaller hip angle than the Amazone. A larger part of your body weight rests on the seat. This gives the Jumper seat a more traditional sitting experience.

Amazone

The shape of the Amazone's seat facilitates the most open hip angle. Your weight is divided evenly across the seat and the floor. The Amazone seat strikes the best possible balance between the control and healthy posture of 'standing', and the comfort of 'sitting'.





Steady stool for frequent sitting and standing.

The LCS5011 series provide the solution for work that requires frequent changes between sitting and standing. They are also ideal for workplaces where there is a lack of leg space.

In order to work comfortably and without strain, your sit stand stool should be adjusted to the desired working height. Thus, you find the beautifully designed "Steady" in many museums, including the famous "National Museum" in Amsterdam. With the adjustable seat and the handy footrest (foldable), the "Steady" can be used for support in a standing position as well as being a comfortable seat.

Color: Black





So much more than something that catches the eye in the office.

The LCI1011 series stool is the archetypal form of all seating, the first introduction to the world of seating. It stylishly unites opposites, it stands for both tranquillity and action, for concentration and movement. You feel freer when you sit on a stool; always ready to jump up with the next new idea. This makes the other contrasting expectations all the greater.

It must be flexible enough to enable people to have spontaneous conversations while at the same time providing great practical features and design. So the LCI1011 series – bridge element in three different sizes adapts perfectly to any room situation, and thanks to the full range of electrification options, creates the ideal basis for discussion at any time.

In terms of design, LCI1011 series effortlessly adapts itself to any space. All the wooden elements are available in black, white, oak or American walnut. All this means that bar stools and bridge element are furniture that can be used anywhere at all, as if specially created for every office where there is a distinctive culture of dialogue.

High-quality materials characterise the charismatic appearance of the LCI1011 series. It plays with colour and touch and feel. The metal parts are available in black, brilliant silver, white or in tangibly classy blasted aluminium versions.

Color/metal parts: black, brilliant silver, white, blasted and anodised silver.



Sitting without compromise.

The LCI1001 series puts an end to difficult decisions. LCI1001 does not compromise at all, in terms of the clear and simple design, the easy-to-use functions, the reliability, or the ergonomics and comfort. LCI1001 is inviting and comfortable.

The LCI1001 office swivel chair is perfectly ergonomically equipped. Its soft upholstery and generous feeling of spaciousness make it wonderfully comfortable.

LCI1001 has many features that make working more pleasant. It adjusts perfectly to the body in every aspect and its high-performance synchronous mechanism and high quality finish, together with the integrated headrest, provide an especially comfortable experience. LCI1001 represents uncompromising seating performance, which ensures the best possible efficiency at work.

Colors: Black, red, yellow, dusty grey, Pastel blue, green, nut brown and ultramarine blue.





Solid stool with multi-purpose function.

The LCS5021 is a solid stool with a round gas lift just below the seat. The seat can be furnished with Beech, PU (polyurethane) or Stamskin. All are easy to clean. Additionally, polyurethane is resistant to various chemical substances and Stamskin has antibacterial properties and is also resistant to urine, blood, sweat and mildew and is water repellent.

To support your feet, the LCS5021 features a footring that is adjustable in height. Equipped with an aluminium base that is 70 cm in diameter.

- ◆ Height adjustment 58-83 cm
- ◆ Work surface Height 90-100 cm
- ◆ Adjustable footring ø 54 cm



Labsit 9123
Seating height 450 - 650 mm
With Castors
Backrest height 420 mm



Labsit 9121
Seating height 560 - 770 mm
With glides & footring
Backrest height 420 mm



Labsit 9125
Seating height 560 - 810 mm
With sit - Stop, casters & footring
Backrest height 420 mm



Labsit 9127
Seating height 450 - 650 mm
With castors
Large comfortable seat



Labster 9103
Seating height 400 - 510 mm
With Castors
Backrest height 300 mm



Labster 9101
Seating height 550 - 800 mm
With glides and footring
Backrest height 300 mm



Labster 9106
Seating height 650 - 850 mm
Standing rest



Labster 9107
Seating height 450 - 650 mm
Stool with castors



Amazon
Work surface height 800-900 mm With Soft Swivel castors. Height adjustment: 590 - 770mm. 340 x 300mm (WxD)



Amazon with lumbar support
Work surface height 800-1000 mm With Soft Swivel castors. Height adjustment: 590 - 770mm. 340 x 300mm (WxD)



Amazon Balance
Work surface height 800-1000 mm With Soft Swivel castors. Height adjustment: 590 - 770mm. 340 x 300mm (WxD)



Jumper
Work surface height 800-1000 mm With Soft Swivel castors. Height adjustment: 590 - 770mm. Seat appr. 440 x 300mm (WxD)



Jumper with lumbar support
Work surface height 800-1000 mm With Soft Swivel castors. Height adjustment: 590 - 770mm. Seat appr. 440 x 300mm (WxD)



Amazon/Jumper ESD
Work surface height 800-900 mm With Soft Swivel castors Ø65 mm and Balance Adjustable



Jumper Balance with lumbar support
Work surface height 800-1000 mm With Soft Swivel castors. Height adjustment: 590 - 770mm. Seat appr. 440 x 300mm (WxD)

**Stahulp 232**

Height adjustment 550-800 mm
Worktop height 800-1000 mm
Steel base, black ø 600 mm

**Stahulp 2232**

Height adjustment 580-830 mm
Worktop height 800-1000 mm
Aluminum frame ø 700 mm

**Stahulp 4232**

Height adjustment 670-920 mm
Worktop height 900-1000 mm
Suitable for very little legroom

**Stahulp Steady**

Height adjustment 660-830 mm
Worktop height 900-1000 mm
Steel folding frame

**KINETICis5 700K**

Standing rest seat height
665 - 815 mm

**KINETICis5 710K**

Standing stool with
footrest/seat height 665 - 815
mm

**KINETICis5 705K**

Standing stool seat height
665 - 815 mm

**YOSTERis3 152Y**

Office swivel chair
Seating height 420-530 mm
Backrest height 595-655 mm

**YOSTERis3 365Y**

Swivel armchair
Seating height 420-530 mm
Backrest height 755-815 mm

**YOSTERis3 450Y**

Visitor chair four legs with
plastic armrests
Seating height 420 mm
Backrest height 420 mm

**YOSTERis3 550Y**

Visitor chair cantilever with
plastic armrests
Seating height 425 mm
Backrest height 420 mm

Chairs for comfortable laboratories

Whether in the pharmaceuticals, biotech, chemistry, health care, clean-room, or medical technology field, Labmodul chairs are always the perfect seating solution with their healthy and hygienic design. The clever combination of material, form, and processing provides all the properties needed for use in the lab.

Good seating is an investment in the future. The quality of the workplace is one of the key factors in employee motivation. Labmodul chairs make a core contribution to this in terms of comfort and exceptional design and therefore help to achieve optimal working conditions.

Sitting on Labmodul chairs is very enjoyable. The combination of optimal laboratory suitability and intuitive handling makes this chair a real all-rounder.

The exceptional price-performance ratio ensures that every kind of laboratory can now have chairs with optimal comfort and suitability. This also makes Labmodul chairs the ideal solution when it comes to furnishing larger properties.

Labmodul chairs

ANTIBACTERIAL

Artificial leather upholstered covering with significant anti-germ effects (Sanitized)

SUITABLE FOR CLEANROOMS

For use in cleanrooms category 3 in accordance with ISO 14644-1

FREE FROM POLLUTANTS No toxins or emissions

GMP-CONFORM

Meets the specifications of the GMP regulations

MINIMAL JOINTS

Hygienic design for easy cleaning and disinfection

RESISTANT TO DISINFECTANTS AND CHEMICALS Resistant to all of the usual disinfectants and chemicals in accordance with ISO 2812 Resistant to all of the usual disinfectants and chemicals in accordance with ISO 2812

SUITABLE FOR USE IN BIOTECHNOLOGY LABORATORIES

Adheres to biosafety level BSL1, BSL2, BSL3 of the Directive for Biological Agents

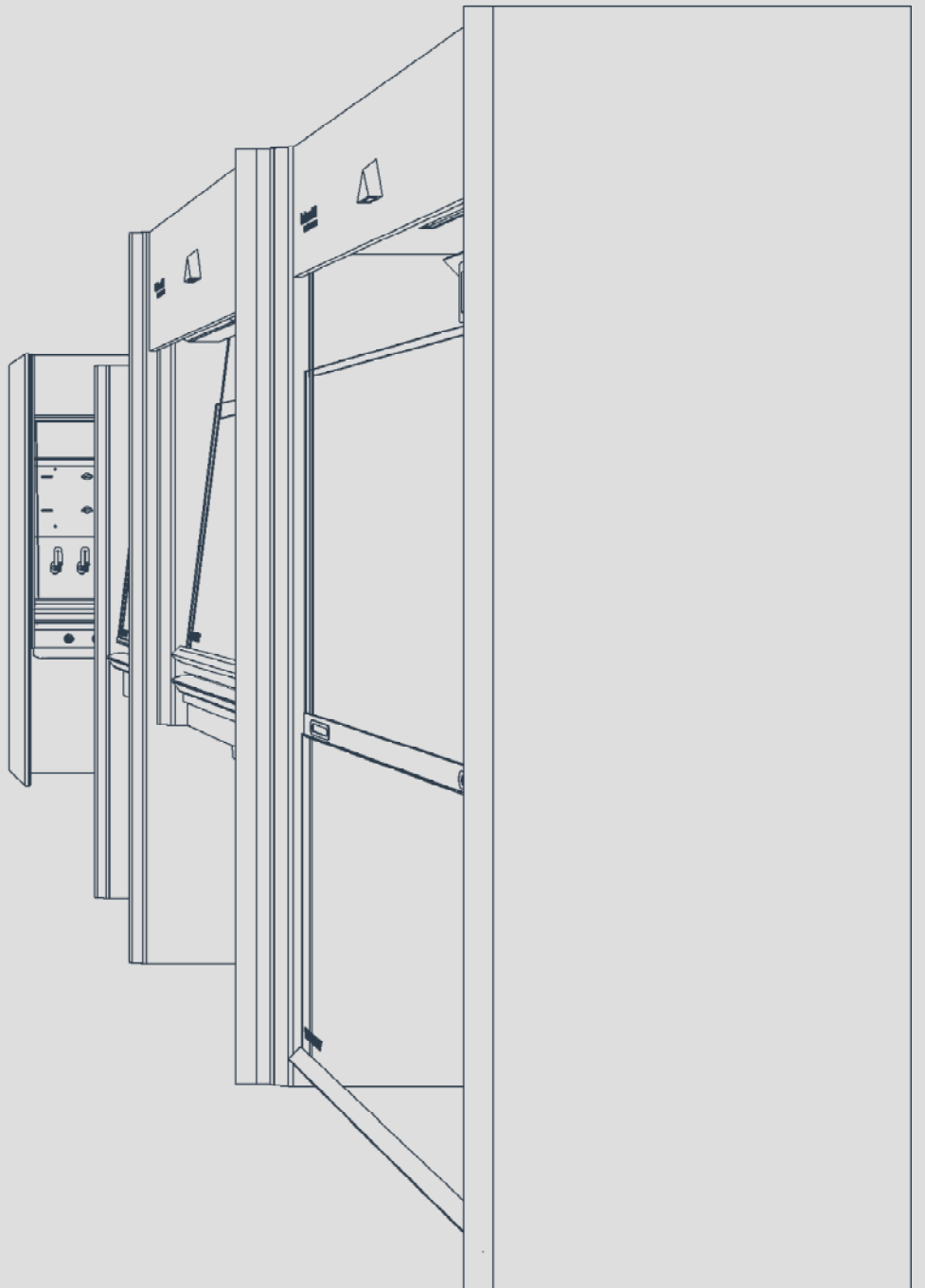
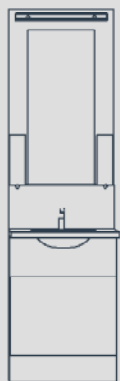
GS-CERTIFIED

For the highest levels of safety











labmodul
Designing safety

Version: ★ ★ ★

LABMODUL A/S

Valhøjs alle 190
DK-2610 Rødovre
info@labmodul.dk